



INSTALLATION GUIDE

Dual Pointer Sign

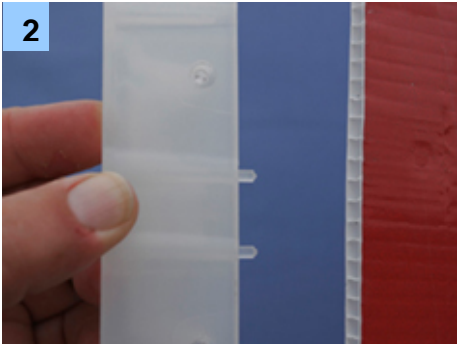
Page 1 of this installation guide explains how signAclips fit to flute board and how they fit to star pickets. Page 2 is the step by step instructions for installing a dual pointer sign.

Helpful hint: Hold signs together on an imaginary support pole to determine which edge of both signs should a signAclip be installed to ensure signs point in the correct direction when installed.

How to fit signAclips to FLUTE BOARD



1 Positioning signAclips
Fit each signAclip at the same measured distance from the top of each pointer sign.

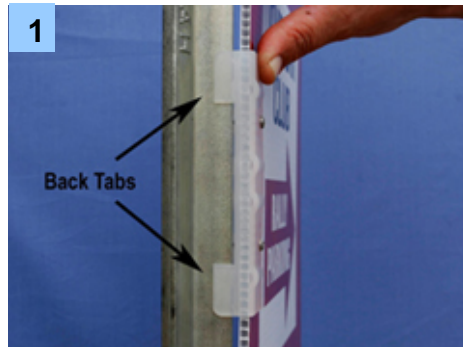


2 Fitting signAclips
Insert the 'prongs' of the signAclip into the flutes of the flute board and push the clip all the way onto your sign.

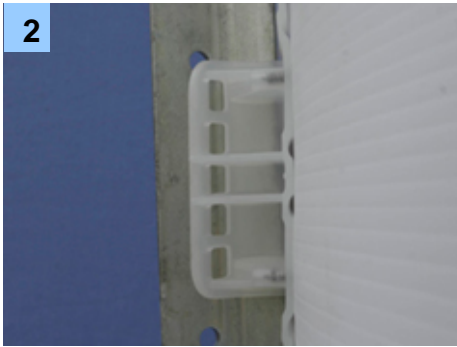


3 Securing signAclips
Secure the signAclip in place by inserting 2 x 6 gauge screws into the clip. Do not over tighten screws.

How to fit signAclips to STAR PICKETS



1 Fit the back tabs over the solid fin of the star picket.



2 Position the curved section of the signAclip against the fin with the predrilled holes



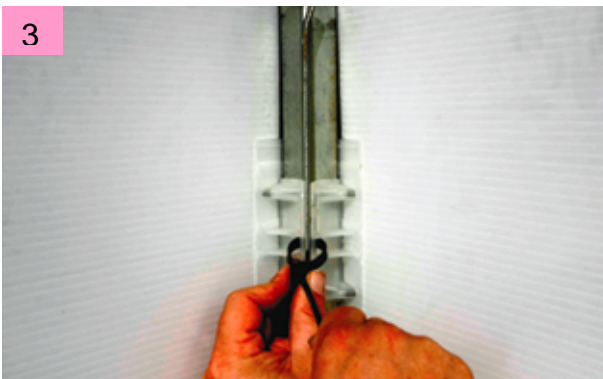
3 Slide the signAclip over a predrilled hole on the star picket, insert and tighten a single cable tie

Installing a Dual Pointer sign



Fit both signs to the star picket and rotate the star picket until both signs are pointing in the right direction to obtain the correct fin direction for the star picket.

Maintaining the star pickets correct fin direction, hammer the star picket into the ground as vertical as possible.



Refit both sign clips to the star picket and position both clips over a single predrilled hole on the star picket. Insert a single cable tie through both clips and a predrilled hole and tighten the cable tie to secure both signs to the star picket.

Congratulations your sign is now fully installed.

