



# CLIP PLACEMENT

## Large Single Panel (over 600mm deep)

When fitting two clips to a single edge, it is important to install them to a 'measured spacing' that corresponds with the predrilled holes on all star pickets. This will ensure your signAclips line up with the predrilled holes on any star picket.



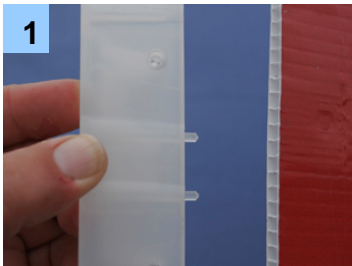
**STEP 1. INSTALL UPPER SIGNACLIPS:**  
Fit both clips to the same measured distance from the top of your sign. We recommend 100mm or greater.

Note: 100mm is adequate spacing for sign to sit higher than star picket

**STEP 2. INSTALL LOWER SIGNACLIPS:**  
Fit both clips to one of the following measured spacing's.  
220mm  
420mm  
575mm  
Refer to table below.

Sign Depth	Spacing between clips
600mm to 800mm depth	220mm
800mm to 1030mm depth	420mm
1040mm to 1200mm depth	575mm

## How to fit signAclips to FLUTE BOARD



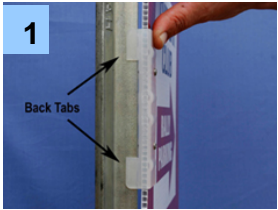
1 Insert the '4 x prongs' of the signAclip into the flutes of the flute board and push the clip all the way onto your sign.



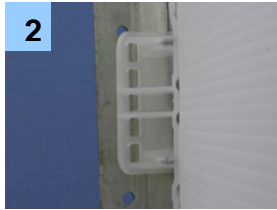
2 Secure the signAclip to the flute board by inserting 2 x 6 gauge screws into the clip.



## How to fit signAclips to STAR PICKETS



Fit the back tabs of the clip over the solid fin of any star picket.



The curved section is positioned against the fin with the predrilled holes.



Insert a cable tie through a predrilled hole & the signAclip - tighten the cable tie to secure in place.

## Installing a Large Single Panel sign



Correctly fit the sign/clips to the 1<sup>st</sup> star picket and rotate the picket until the correct sign direction is achieved. This obtains the correct fin direction for the 1<sup>st</sup> star picket.

Maintaining the 1<sup>st</sup> star pickets correct fin direction, hammer the star picket into the ground as vertical as possible.



Re fit the sign to the 1<sup>st</sup> star picket & position the upper signAclip over the 2<sup>nd</sup> predrilled hole. Secure the clip to the picket with a cable tie. Also secure the lower signAclip to the 1<sup>st</sup> star picket.

Holding the 2<sup>nd</sup> star picket off the ground, fit the picket to both signAclips and then let the picket drop to the ground. This determines the correct angle and fin direction for the 2<sup>nd</sup> star picket.





Holding the signAclips onto the picket, hammer the 2<sup>nd</sup> star picket into the ground, letting the clips slide along the star picket. Hammer the 2<sup>nd</sup> star picket to the same height as the 1<sup>st</sup>.

Check that the upper signAclip is over the 2<sup>nd</sup> predrilled hole and then secure both signAclips to the 2<sup>nd</sup> star picket with cable ties.



Congratulations your sign is now fully installed.