



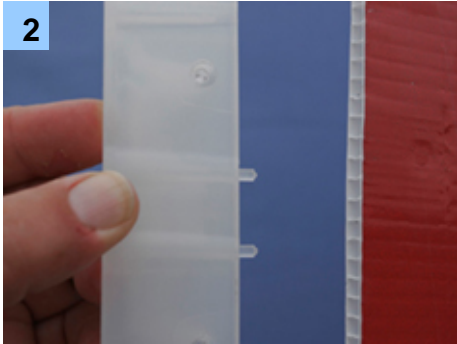
INSTALLATION GUIDE

Single Panel Sign – Less than 600mm deep

Page 1 of the installation guide explains how signAclips fit to flute board and how they fit to star pickets. Page 2 is the instructions for installing a small single panel sign.

Helpful hint: Install both signAclips on either side of your sign at same measured distance from the top of the sign. This will ensure your sign looks symmetrical and will also help you locate predrilled holes on the star picket during installation.

How to fit signAclips to FLUTE BOARD

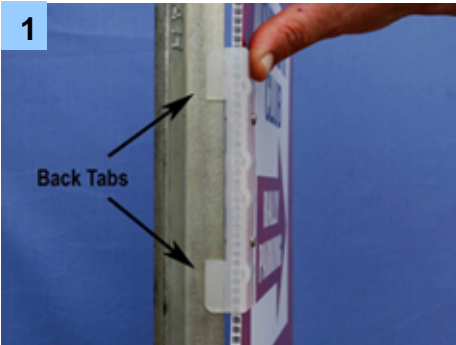


1
Positioning signAclips
Fit each signAclip at the same measured distance (minimum of 100mm) from the top of your panel sign.

2
Fitting signAclips
Insert the 'prongs' of the signAclip into the flutes of the flute board and push the clip all the way onto your sign.

3
Securing signAclips
Secure the signAclip in place by inserting 2 x 6 gauge screws into the clip. Do not over tighten screws.

How to fit signAclips to STAR PICKETS



1
Fit the back tabs over the solid fin of the star picket.

2
Position the curved section of the signAclip against the fin with the predrilled holes

3
Slide the signAclip over a predrilled hole on the star picket, insert and tighten a single cable tie

Installing a Single Panel sign



Fit the signAclip to the star picket and rotate the star picket until the sign is facing in the correct direction. This also obtains the correct fin direction for the 1st star picket.

Maintaining the 1st star pickets correct fin direction, hammer the star picket into the ground as vertical as possible.



Refit the signAclip to the 1st star picket and position the clip over a single predrilled hole. Insert a single cable tie through the clip and the predrilled hole. Tighten the cable ties to secure the sign to the 1st star picket.



Holding the 2nd star picket off the ground, fit the picket to the 2nd signAclip and then let the picket drop to the ground. This determines the angle of the 2nd star picket.



Holding the signAclip onto the picket, hammer the 2nd star picket to the same depth as the 1st one, locate a predrilled hole on the star picket and secure with a cable tie



Congratulations your sign is now fully installed.

